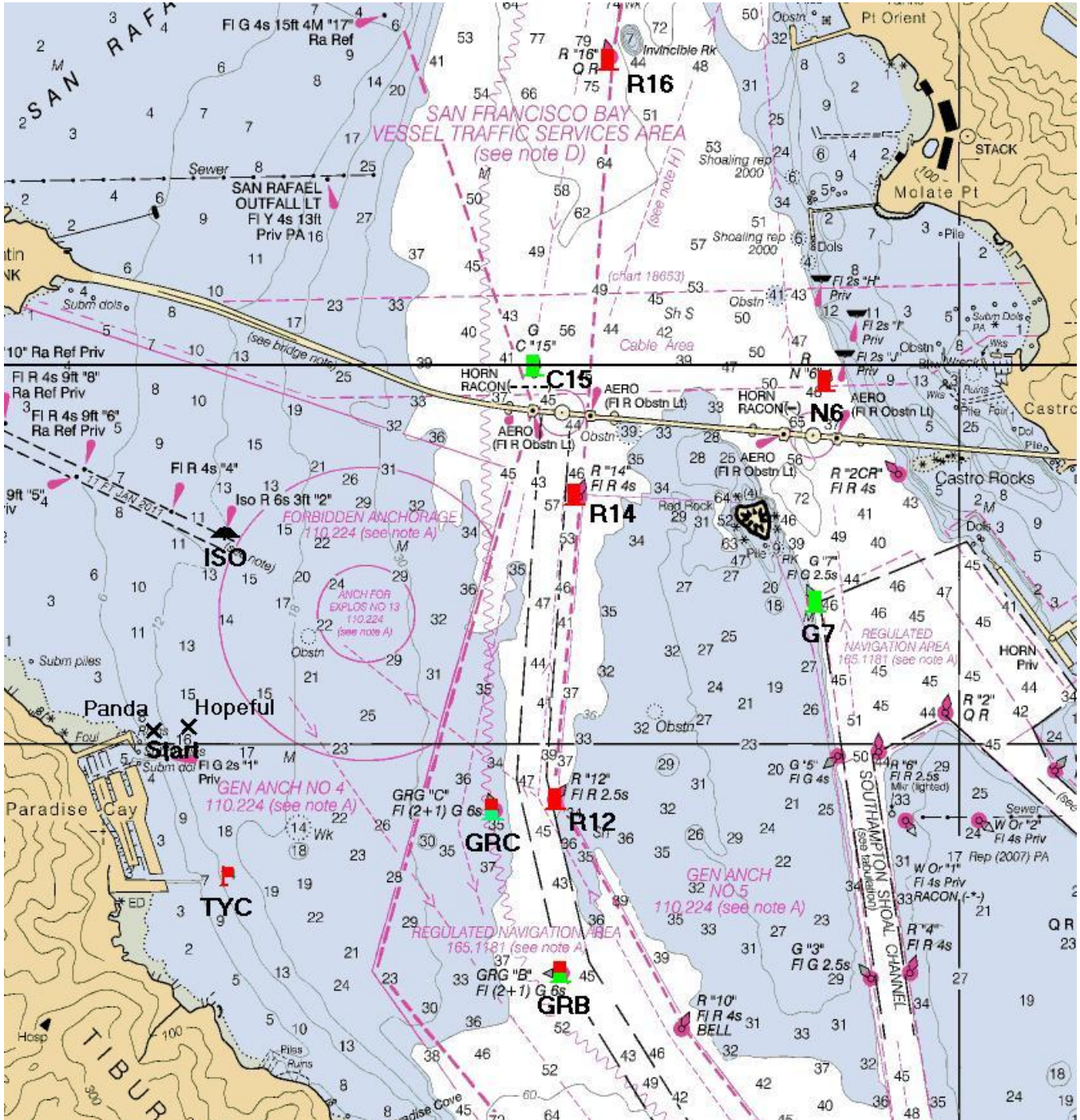
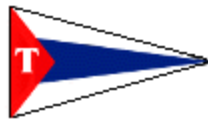




TIBURON YACHT CLUB

TYC Race Marks – GPS Positions





TIBURON YACHT CLUB

This document is written as an aid to racers participating in TYC Club Races.

Positions for the San Francisco Bay Navigation Marks have been taken from USA-NOAA/NOS chart 18649_1 and may not be completely accurate.

<u>Mark</u>	<u>Chart Details</u>	<u>Lat</u>	<u>Long</u>
C15	<i>G C "15"</i>	37° 56.238' N	122° 26.796' W
G7	<i>G "7" Fl G 2.5s</i>	37° 55.478' N	122° 25.608' W
Hopeful	-	37° 55.058' N	122° 28.277' W
ISO	<i>Iso R 6s 3ft "2"</i>	37° 55.698' N	122° 28.100' W
N6	<i>R N "6"</i>	37° 56.189' N	122° 25.558' W
Panda	-	37° 55.037' N	122° 28.379' W
R12	<i>R "12" Fl R 2.5s</i>	37° 54.813' N	122° 26.708' W
R14	<i>R "14" Fl R 4s</i>	37° 55.825' N	122° 26.603' W
R16	<i>R "16" O R</i>	37° 57.291' N	122° 26.473' W
GRB	<i>GRG "B" Fl (2+1) G 6s</i>	37° 54.233' N	122° 26.677' W
GRC	<i>GRG "C" Fl (2+1) G 6s</i>	37° 54.775' N	122° 26.961' W
TYC	-	37° 54.499' N	122° 28.032' W
Brothers		37° 57.790' N	122° 26.008' W
Sisters		37° 59.294' N	122° 26.501' W
Marina Entrance	<i>Fl G 2s "1" Priv</i>	37° 54.950' N	122° 28.349' W

TYC Marks:

Hopeful (a white plastic can marked "Hopeful") is the Outer Distance mark of the TYC Start Line off Paradise Cay **North** entrance

Panda (a red inflatable mark) is the Inner Distance mark of the TYC Start Line off Paradise Cay **North** entrance

TYC (a white plastic can marked "TYC") is located off Paradise Cay **South** entrance

This document should not be used for navigational purposes.